

STUDENT UNIFORM CODE

Our uniform policy was designed to maintain the concept of Christian dignity and personal self-esteem, while reinforcing the idea of a unified team concept. Parents need to help our students fully comply with this policy. Students are expected to report to school and to leave school in a complete uniform each day, beginning with the first day of school. Please note that preschool students are required to wear the St. Ferdinand gym uniform as their uniform.

In order to promote a spirit of neatness and equality, all students from kindergarten through 8th grade will wear uniforms. Students in pre-school will wear the school gym t-shirts or sweatshirts with solid colored pants and gym shoes on a daily basis (no dresses or skirts) Gym shoes must not have rollers or lights.

Each student has the obligation of wearing the mandatory school uniform. The rules will be strictly enforced. On rare occasions due to an emergency, if it is impossible for a student to be in full uniform, the student **MUST** bring a note from a parent/guardian as to the reason the student is unable to wear the **ENTIRE** uniform for the day. Students may receive a detention for continued disregard for the uniform code.

Students are to arrive and leave the premises in full uniform. The principal may make the exceptions to this policy. Uniforms are to be marked with some sign of personal identification. The school/teacher are not responsible for lost items. Staff members reserve the right to ask students to remove accessories that are deemed inappropriate for school.

In order to promote a neat, uniform appearance, blouses and skirts must be the ones purchased through the Dennis Uniform store. Fleece jackets are also purchased through the Dennis Uniform store since they contain the school logo. Uniform shoes will be solid black, grey, navy, or white shoes (either dress shoes or sneakers/gym shoes are acceptable). Foremost to note is that shoes must be closed toe: Sandals, clogs, open-backed styles, heels, boots, and similar styles are not allowed). At no point will shoes with lights or rollers be allowed.

During snow/wet weather, students are asked to wear boots and bring a change of shoes.

Expensive trinkets, items, jewelry or possessions should not be brought to school.

Modest jewelry is allowed. If jewelry is deemed inappropriate, the student will be asked to remove it and not wear it in the future. Girls may wear earrings covering the earlobe, but dangling earrings are not allowed. Large earrings can be a safety issue. Multiple piercings are prohibited. Boys may not wear earrings.

Religious items on a chain may be worn, but must be tucked inside the shirt or blouse.

Tattoos and body piercings are prohibited.

Proper grooming is required by all students at all time. The principal and teachers have the right to judge when normal social and acceptable standards are not met.

Uniforms are required for gym, and must be purchased through the Dennis Uniform store. The gym uniform includes shorts, sweatpants, t-shirts and sweatshirts. Shorts may be worn in the warmer months, but the uniform sweatpants must be worn during cold weather. Since the students remain in their gym uniforms for the entire day, it is essential that they come to school in the correct gym uniform with the school logo.

Gym shoes must be solid color, and can only be solid white, black, navy, or grey. Shoes that have wheels and lights are not allowed, as these can be both dangerous and distracting.

Dress Code

Uniforms can be ordered through Dennis Uniform online, over the phone, or at the local Dennis Uniform location. All shirts, skorts, jackets/sweaters, and gym wear must come from Dennis Uniform. Pants may be purchased at Dennis or any other store carrying the “uniform” style.

Dennis Uniform
7055 W. Higgins Ave.
Chicago, IL 60656
708-669-7944

PRESCHOOL:

- St. Ferdinand School logoed gym shirt / sweatshirt (Purchased through Dennis Uniform)
- Any solid colored pants or shorts (No skirts, dresses, or clothes with sequins / sparkles / glitter / “bling”)
- Gym shoes (solid black, grey, white, or navy color)

BOYS: Grades K-8

- Light Blue Saint Ferdinand Logoed Polo, in either short or long sleeves (Purchased through Dennis Uniform)
- Navy twill trousers (Purchased through Dennis Uniform or other store carrying “uniform” style ... Skinny pants, jeans, etc. are NOT allowed)
- Navy fleece jacket with St. Ferdinand logo (Purchased through Dennis Uniform)
- Solid black, grey, white or navy shoe (may be dress or sneaker/athletic style)

GIRLS: Grades K-8

- Light Blue Saint Ferdinand Logoed Polo, in either short or long sleeves (Purchased through Dennis Uniform)
 - Navy twill trousers (Purchased through Dennis Uniform or other store carrying “uniform” style ... Skinny pants, leggings, jeggings, jeans, etc. are NOT allowed)
 - Plaid skirt with attached shorts (aka, “skort) (Purchased through Dennis Uniform)
 - Navy fleece jacket with St. Ferdinand logo (Purchased through Dennis Uniform)
 - Solid black, grey, white or navy shoe (may be dress or sneaker/athletic style)
- ✦ Girls have an option of either wearing the plaid skorts, or the navy twill slacks.
- ✦ Makeup, nail polish, and artificial nails are prohibited.
- ✦ Uniform shoes must be closed-toe shoes and either solid black, grey, navy, or white. Grey, white, or navy tights or socks must be worn.
- ✦ Uniforms are purchases through Dennis Uniforms

All grades and groups may wear navy dress walking shorts from the first day of school through September 30, and from May 1 to the end of the school year. Sweaters are not required during these dates.

On days above 80° from the first day of school through September 30, and from May 1 to the end of the school year, each student may bring a 16 oz. or smaller water bottle with a protective top. This bottle may be refilled with water during the day for grades PreK to 4th grade. Middle school switches classrooms and have an opportunity to visit the drinking fountain during passing periods (approximately every 40 minutes).

Jewelry

When the students are in uniform, watches, rings, and tasteful religious jewelry may be worn. Girls may also wear small earrings that rest at the earlobe.

Make-Up, Nails, Tattoos, Contact Lens

Makeup, nail polish, and artificial nails are not allowed. Tattoos (including henna) are not allowed. Contact lenses that are designed to change the appearance of the eyes unnaturally, such as those producing an “enlarged pupil” or “cat’s eye” look are strictly prohibited.

Student Hair

Boys Hair:

Hair must be neat, clean and well-groomed. Hair should be off the face and not cover the forehead or ears. Severe, bizarre, and extreme styles/colors are not allowed. Hair may extend only to the top of the collar, and the sides, back, and top need to be the same length (ie., no punk, faux-hawk, Mohawk, etc.) Hair in general should not be longer than 2 inches. Excessive sideburns are not acceptable (nothing lower than earlobe). There should be no more than 1 part in the hair. When a student is told to get a haircut, if it does not meet the requirements stated previously, the student will be sent home. Final approval will be at the principal's discretion.

Girls Hair:

Hair must be neat, clean and well-groomed. Severe, exotic, bizarre and extreme styles and colors are not acceptable. Natural colors are the only colors that girls should have. Absolutely no colors outside of blonde, black, brown, natural red, or auburn are allowed. Hair is not permitted to be multi-colored. When a student is told to change her hair, if it does not meet the requirements stated previously, the student will be sent home. Final approval will be at the principal's discretion.

Shoes

With safety, comfort, and consistency in mind, solid colored closed-toe shoes (black, grey, navy, or white) are appropriate for all our students and complete the uniform. Gym shoes are to be worn on days that the student has gym, with the gym uniform. Sandals, boots, heels, open back styles, clogs, etc. should not be worn. The student is out of uniform if they are wearing any other type of shoe, and will receive an out of uniform notice.

Physical Education (Gym) Class Uniform

All students are required to wear gym uniforms to participate in PE. Plain black, grey, white, or navy gym shoes are required. **Please make sure that the shoes do NOT light up, and shoes must not have wheels.** For safety and loss prevention, jewelry should not be worn on assigned gym days.

Gym uniform T-shirts and shorts may be worn from the start of school to November 1 and from March 1 to the end of school. The complete gym sweat suit may be worn during the other months.

On gym days, students are to come to school wearing their gym uniforms instead of their regular school uniform.

Out of Uniform Days (including dances and extracurricular events)

On designated dress-down days, students may choose to wear casual clothing or remain in uniform. Those who dress casually must usually pay \$1.00 for the privilege; money collected on dress-down days helps fund various school endeavors, such as our technology program or a special events.

A Catholic approach to clothing recognizes that the body, created good by God, must be cared for and respected, even if doing so means rejecting popular fashion. It also respects those around us by recognizing the effect that various clothing can have on the minds and hearts of those who see us. Most importantly, it honors God's expectations of modesty. The way that one dresses reflects one's attitude toward this basic reality. Any non-uniform clothing worn on dress-down days must be clean, neat, and appropriate.

All students must dress modestly and conservatively during dress down days. Girls may not wear low cut tops (collarbone showing is not allowed) or excessively tight-fitting pants. If wearing tighter fitting pants or leggings, girls (all grades: preschool to eighth-grade) must have their bottoms covered by their looser fitting top.

Students must NOT wear (*at any time*):

- Torn or ripped clothing.
- Shirts that do not reach down to and cover the midsection, both standing and bending.
- Any tight-fitting clothing — this extends to pants as well as shirts.
- Excessively tight jeans, pants, or leggings without having a top/shirt that completely covers the bottom.
- Low-cut/thin-strap tops worn by themselves and not underneath another garment that covers them.

Any shirt/blouse/top that would be considered "open" or revealing and worn by itself, is absolutely inappropriate and not allowed under any circumstances.

- Very short skirts (skirts worn must be at least knee length).
- Very short shorts (shorts worn must be at least knee length).
- Shoes without a secure back (flip flops, etc.), or with high/stiletto-type heels.
- Any drawings, tattoos, or other markings visible on the skin.
- Bracelets or other accessories deemed inappropriate.
- Hair color which is unnatural or any distracting haircut or hair style.
- Low cut tops, sweaters, or dresses that expose collarbone.
- Shorts/sweats with writing across the back

- Excessively “baggy” shorts/pants
- Any shirt promoting violence or violent or illegal activities
- Clothing with inappropriate language/graphics

No student will wear clothing with inappropriate language or graphics. Students will be asked to phone home to have a change of clothing brought to school before being permitted in the classroom. The privilege of participation for future “dress down days” may be withdrawn for students who refuse compliance with this policy.

The Principal/teacher may, at their discretion, require a student to obtain different clothing from home (if possible) or provide school issued clothes when the student’s apparel does not meet the school’s standards.

NOTE: Because of the constant changing nature of fashion, the school reserves the right to classify any style of dress as inappropriate.

Change of Clothes Policy

For students in Grades PS, K, 1 and 2, it is **highly recommended** that at least one extra set of clothes be kept in his/her backpack in case of spilled food or personal hygiene/bathroom incidents. Be sure to change out the clothes as the weather changes.

In the following instances, parents will be called to bring their child clean or proper clothes:

- If a child has violated the school dress code or is not in the proper full uniform
- If a child has had an accident

In extreme cases, a child will be sent home after an accident to be cleaned properly for sanitary reasons.

Welcome to DENNIS!

We are thrilled that St. Ferdinand Parish School has chosen DENNIS to be your uniform partner, and we look forward to working with you! At DENNIS, we are the uniform experts. We've spent the past 95 years designing uniforms and uniform programs, now serving more than 2,000 top schools across the nation.

Shop online

<https://www.dennisuniform.com>

Enter your school code: GSFPV

Your mobile-friendly web store is customized for your school! Shop an interactive catalog of all your uniform options, dialed in by your child's gender and grade level.

Your school's uniform items will be available for purchase online beginning May 2019.

National Customer Service 800.854.6951

A customer service team member is available to assist with questions and to take your order. Call us M-F 8am-5pm PST.

Seasonal Promotions

All year long, we offer sales and specials for customers. Visit us online to sign up for email reminders!

<https://www.dennisuniform.com/promotions>



DENNIS
UNIFORM

— since 1920 —



Online: [dennisuniform.com](https://www.dennisuniform.com)

National Customer Service: 800.854.6951



Your DENNIS Store

Get year-round personalized service in your local store!
7055 West Higgins Avenue, Chicago, IL 60656
Phone 708.669.7944

REGULAR STORE HOURS

Tuesday 10am – 6pm; Wednesday & Thursday 10am – 5pm
Friday 10am – 3pm; Saturday 10am – 2pm

EXTENDED SUMMER HOURS: August only

Monday 10am – 5pm; Tuesday 10am – 7pm
Wednesday-Friday 10am – 5pm; Saturday 10am – 2pm

*DENNIS stores are closed on major holidays
and from Christmas Eve to New Year's Day.*

Questions?

Our website is a great resource for more than just shopping. Visit us online to track your order, return or exchange items, send us feedback, and learn more about the DENNIS story!

<https://www.dennisuniform.com>

ST. FERDINAND PARISH SCHOOL

School Code: GSFPV

3131 N Mason Avenue ; Chicago, IL 60634

Girls, grades: K-8 SKORTS



Girls 3-16	\$48.00
Juniors 1-19	\$54.00
Juniors 21-25	\$54.00

Item #: 035170-903

Pleated Skort-Lincoln Plaid (407)

Girls, grades: K-8 POLO



Youth 2XS-XL	\$23.20
Adult XS-2XL	\$25.20

Item #: 08200A-GFA

GIRLS Lt. Blue Jersey S/S w/St. Ferdinand fiberlok (055)

June ship date

Girls, grades: K-8 POLO



Youth 2XS-XL	\$23.20
Adult S-3XL	\$25.20

Item #: 08300A-GFA

Lt Blue Jersey S/S w/St. Ferdinand fiberlok (055)

June ship date

Girls, grades: K-8 POLO



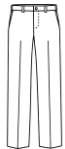
Youth 2XS-XL	\$27.20
Adult S-3XL	\$29.20

Item #: 08300C-GFA

Lt Blue Jersey L/S w/St. Ferdinand fiberlok (055)

June ship date

Girls, grades: K-8 PANTS



Girls 3-6 or Slim 4-6	\$28.00
Girls 7-20 or Slim 7-16	\$30.00
Girls Plus 6½-16½	\$34.00
Juniors 1-25	\$35.00

Item #: 040390-962

Girls-Irvington Flat Front-Navy Twill (067)

Girls, grades: K-8 WALK SHORTS

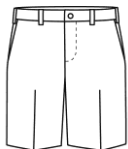


Girls 3-6X	\$27.00
Girls 7-20	\$29.00
Girls Plus 6½-18½	\$31.00
Juniors 1-25	\$33.00

Item #: 040320-998

Navy Knee Length FF Stretch (067)

Girls, grades: K-8 WALK SHORTS



Girls 3-6 or Slim 4-6	\$25.00
Girls 7-20 or Slim 7-16	\$27.00
Girls Plus 6½-16½	\$29.00
Juniors 1-27	\$31.00

Item #: 040820-962

Girls-Irvington Flat Front-Navy Twill (067)

Girls, grades: PK-8 SWEATSHIRT 9oz



Youth 3XS-XL	\$24.75
Adult S-3XL	\$27.75

Item #: 090000-GFA

Navy Crew Neck w/St. Ferdinand fiberlok (067)

June ship date

Girls, grades: PK-8 SWEATPANT 9oz

Youth 3XS-XL \$24.75
Adult S-3XL \$27.75

Item #: 090410-GFA

Navy w/St. Ferdinand fiberlok (067)

June ship date

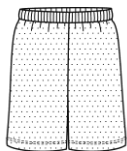
Girls, grades: PK-8 SWEATPANT 9oz

Youth 2XS-XL \$24.75
Adult S-2XL \$27.75

Item #: 090450-GFA

Unisex Open Bottom Sweatpants-Navy w/St.
Ferdinand fiberlok (067)

June ship date

Girls, grades: PK-8 GYM WEAR

Youth 3XS-XL \$20.25
Adult S-3XL \$22.50

Item #: 005800-GFA

Shorts Mini Mesh-Navy w/St. Ferdinand fiberlok (067)

June ship date

Girls, grades: PK-8 GYM WEAR

Youth XS-XL \$14.25
Adult S-3XL \$15.25

Item #: 053800-GFA

T-Shirt 100C-Navy w/St. Ferdinand fiberlok (067)

June ship date

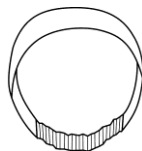
Girls, grades: K-8 FLEECE JACKET

Youth 2XS-XL \$42.25
Adult S-3XL \$52.25

Item #: 054000-GFA

Navy Microfleece Jacket-front zipper w/St. Ferdinand
fiberlok (067)

July ship date

Girls, grades: K-8 ACCESSORIES

One size \$6.15

Item #: 004680-903

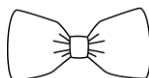
Elastic Back Headband-Lincoln Plaid (407)

Girls, grades: K-8 ACCESSORIES

One size \$6.15

Item #: 004880-903

Padded Headband-Lincoln Plaid (407)

Girls, grades: K-8 ACCESSORIES

One size \$5.15

Item #: 005070-903

Hairbow-Lincoln Plaid (407)

Girls, grades: K-8 ACCESSORIES

One size \$6.15

Item #: 005090-903

Scrunchy-Lincoln Plaid (407)

Girls, grades: K-8 ACCESSORIES

One size \$7.15

Item #: 005290-903

Streamer Bow-Lincoln Plaid (407)

Girls, grades: K-8 ACCESSORIES

Sizes S-M-L-XL

\$6.00

Item #: 047200-900

Bobby Socks/Triple Roll-Navy (067)

Bobby Socks/Triple Roll-White (119)

Girls, grades: K-8 ACCESSORIES

Sizes XS-XL

\$10.50

Item #: 047900-900

Tights Heavy Weight Opaque-Navy (067)

Tights Heavy Weight Opaque-White (119)

While supplies last; All sales final

Boys, grades: K-8 POLO

Youth 2XS-XL

\$27.20

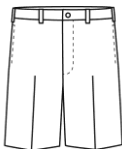
Adult S-3XL

\$29.20

Item #: 08300C-GFA

Lt Blue Jersey L/S w/St. Ferdinand fiberlok (055)

June ship date

Boys, grades: K-8 WALK SHORTS

Boys Reg 3-7 or Slim 4-7

\$25.00

Boys Reg 8-16 or Slim 8-16

\$27.00

Boys Husky 8-32

\$29.00

Mens 27-32

\$31.00

Mens 33-50

\$31.00

Item #: 040720-962

Boys-Irvington Flat Front-Navy Twill (067)

Girls, grades: K-8 ACCESSORIES

Sizes S-M-L-XL

\$7.00

Item #: 047300-900

Knee-Hi Cable Knit-Navy (067)

Knee-Hi Cable Knit-White (119)

Boys, grades: K-8 POLO

Youth 2XS-XL

\$23.20

Adult S-3XL

\$25.20

Item #: 08300A-GFA

Lt Blue Jersey S/S w/St. Ferdinand fiberlok (055)

June ship date

Boys, grades: K-8 PANTS

Boys Reg 3-7 or Slim 4-7

\$28.00

Boys Reg 8-16 or Slim 8-16

\$30.00

Boys Husky 8-32

\$34.00

Mens 27-32 Hemmed

\$35.00

Mens 33-50

\$35.00

Item #: 077000-962

Boys-Irvington Flat Front - Navy Twill (067)

Boys, grades: PK-8 SWEATSHIRT 9oz

Youth 3XS-XL

\$24.75

Adult S-3XL

\$27.75

Item #: 090000-GFA

Navy Crew Neck w/St. Ferdinand fiberlok (067)

June ship date

Boys, grades: PK-8 SWEATPANT 9oz

Youth 3XS-XL \$24.75
Adult S-3XL \$27.75

Item #: 090410-GFA

Navy w/St. Ferdinand fiberlok (067)

June ship date

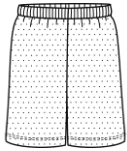
Boys, grades: PK-8 SWEATPANT 9oz

Youth 2XS-XL \$24.75
Adult S-2XL \$27.75

Item #: 090450-GFA

Unisex Open Bottom Sweatpants-Navy w/St.
Ferdinand fiberlok (067)

June ship date

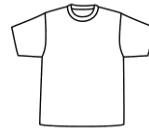
Boys, grades: PK-8 GYM WEAR

Youth 3XS-XL \$20.25
Adult S-3XL \$22.50

Item #: 005800-GFA

Shorts Mini Mesh-Navy w/St. Ferdinand fiberlok (067)

June ship date

Boys, grades: PK-8 GYM WEAR

Youth XS-XL \$14.25
Adult S-3XL \$15.25

Item #: 053800-GFA

T-Shirt 100C-Navy w/St. Ferdinand fiberlok (067)

June ship date

Boys, grades: K-8 FLEECE JACKET

Youth 2XS-XL \$42.25
Adult S-3XL \$52.25

Item #: 054000-GFA

Navy Microfleece Jacket-front zipper w/St. Ferdinand
fiberlok (067)

July ship date

Boys, grades: K-8 ACCESSORIES

Sizes S-M-L-XL \$6.00

Item #: 047100-900

Crew Socks Cotton-Navy (067)

Crew Socks Cotton-White (119)